

REFER TO PAGE 46 FOR PART DIMENSIONS

NOTE: ALL MOUNTING DIMENSIONS ARE FOR REFERENCE ONLY. PLEASE VERIFY YOUR FUSE LAYOUT PRIOR TO FABRICATION.

FUSE CLIP LAYOUT & MOUNTING DETAILS



3517

CAT. NO. 3517	
FUSE SIZE	L DIM.
5mm × 20mm	.910 (23.1)

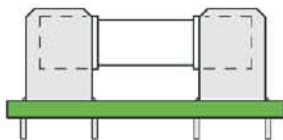
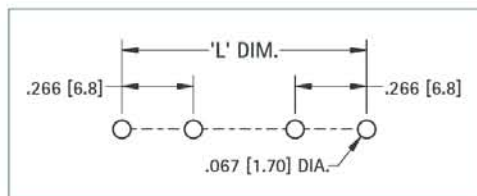


FIGURE 1

Mounting Detail



3517



3518P

CAT. NO. 3518P	
FUSE SIZE	L DIM.
5mm × 20mm	.910 (23.1)

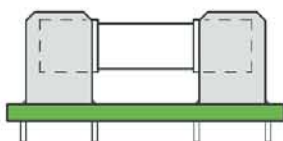
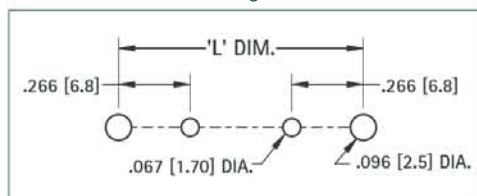


FIGURE 2

Mounting Detail



3518P



3512

CAT. NO. 3512	
FUSE SIZE	L DIM.
5mm × 20mm	.910 (23.1)

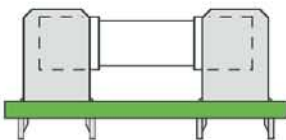
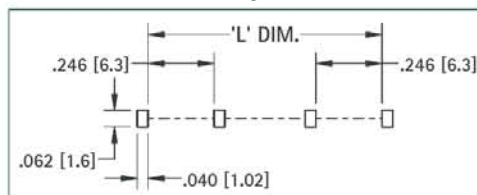


FIGURE 3

Mounting Detail



3512



3512P

CAT. NO. 3512P	
FUSE SIZE	L DIM.
5mm × 20mm	.910 (23.1)

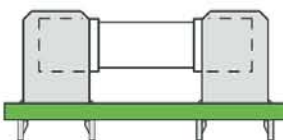
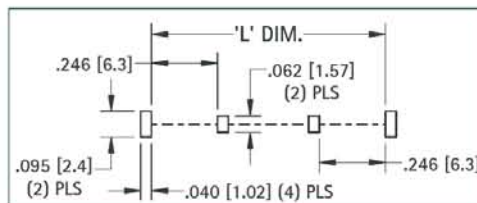


FIGURE 4

Mounting Detail



3512P



3520

CAT. NO. 3520	
FUSE SIZE	L DIM.
5mm × 20mm	.900 (22.9)

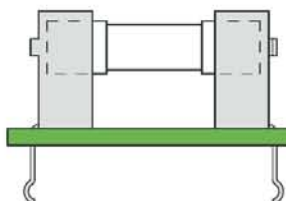
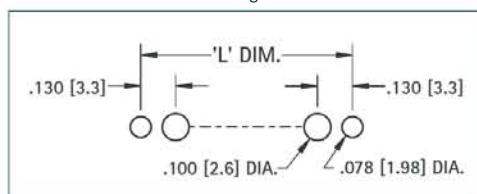


FIGURE 5

Mounting Detail



3520

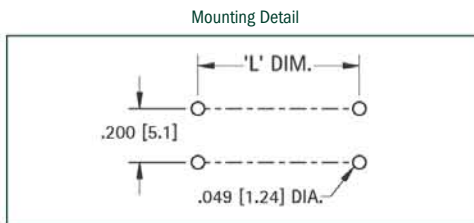
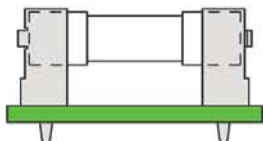
REFER TO PAGE 46 FOR PART DIMENSIONS

NOTE: ALL MOUNTING DIMENSIONS ARE FOR REFERENCE ONLY. VERIFY YOUR FUSE LAYOUT PRIOR TO FABRICATION.



3519

FIGURE 6



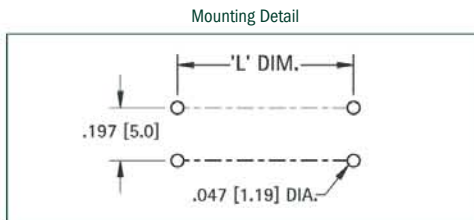
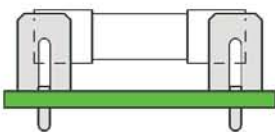
3519

CAT. NO. 3519	
FUSE SIZE	L DIM.
5mm × 20mm	.650 (16.5)



3521

FIGURE 7



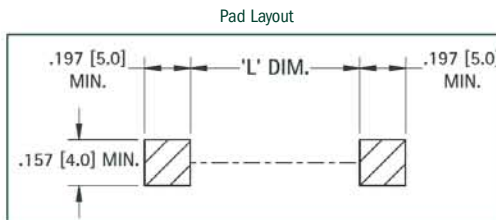
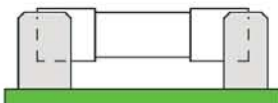
3521

CAT. NO. 3521	
FUSE SIZE	L DIM.
2AG	.514 (13.1)
5mm × 20mm	.710 (18.1)



3561

FIGURE 8



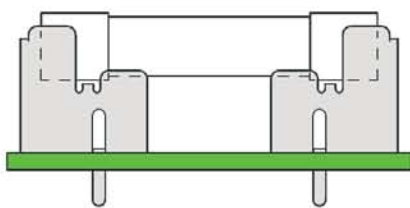
3561

CAT. NO. 3561	
FUSE SIZE	L DIM.
2AG	.354 (9.0)
5mm × 20mm	.500 (12.7)

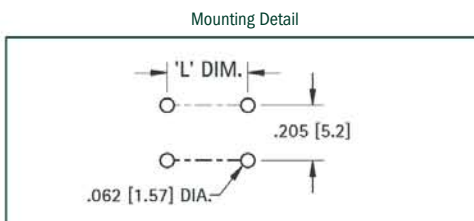


3562

FIGURE 9

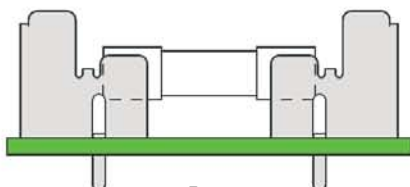


3AG



3562

CAT. NO. 3562	
FUSE SIZE	L DIM.
5mm × 20mm	.820 (20.9)
3AG	



5mm

REFER TO PAGES 46 & 47 FOR PART DIMENSIONS

NOTE: ALL MOUNTING DIMENSIONS ARE FOR REFERENCE ONLY. PLEASE VERIFY YOUR FUSE LAYOUT PRIOR TO FABRICATION.

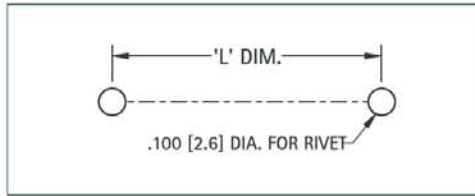
FIGURE 10



3565



Mounting Detail



3565

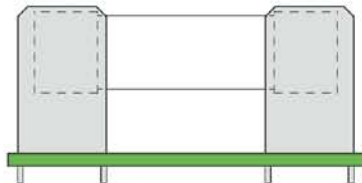
CAT. NO. 3565

DESIGNATION	FUSE SIZE	L DIM.
4AG	.281 (7.1) × 1.250 (31.8)	1.000 (25.4)

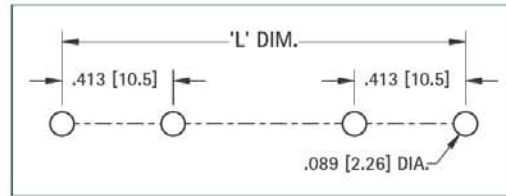
FIGURE 11



3566



Mounting Detail



3566

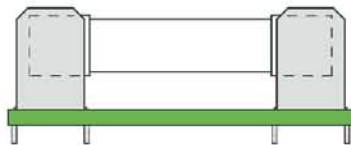
CAT. NO. 3566

DESIGNATION	FUSE SIZE	L DIM.
SM/SS	.406 (10.3) × 1.375 (34.9)	1.515 (38.5)
5AG	.406 (10.3) × 1.500 (38.1)	1.640 (41.7)

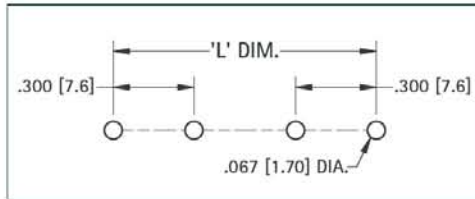
FIGURE 12



3529



Mounting Detail



3514

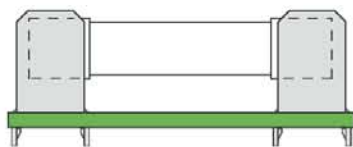
CAT. NO. 3510, 3511, 3513, 3514, 3529

DESIGNATION	FUSE SIZE	L DIM.
1AG	.250 (6.4) × .625 (15.9)	.750 (19.1)
7AG	.250 (6.4) × .875 (22.2)	1.000 (25.4)
8AG	.250 (6.4) × 1.000 (25.4)	1.125 (28.6)
3AG	.250 (6.4) × 1.250 (31.8)	1.375 (34.9)

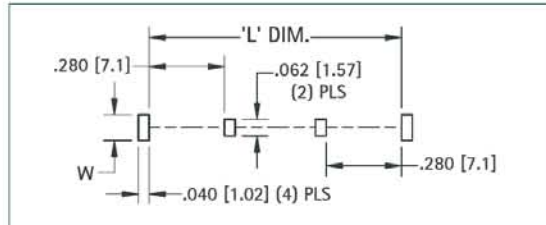
FIGURE 13



3516P



Mounting Detail



3515

CAT. NO. 3515, 3515P, 3516P

DESIGNATION	FUSE SIZE	L DIM.
1AG	.250 (6.4) × .625 (15.9)	.735 (18.7)
7AG	.250 (6.4) × .875 (22.2)	.985 (25.0)
8AG	.250 (6.4) × 1.000 (25.4)	1.100 (28.0)
3AG	.250 (6.4) × 1.250 (31.8)	1.360 (34.6)

ORIENTATION LEGS	
CAT. NO.	W
3515	.062 (1.57)
3515P	.095 (2.4)
3516P	.122 (3.1)

REFER TO PAGE 47 FOR PART DIMENSIONS

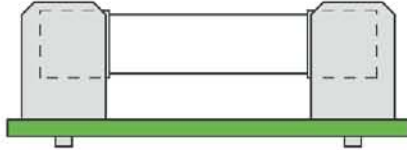
NOTE: ALL MOUNTING DIMENSIONS ARE FOR REFERENCE ONLY. VERIFY YOUR FUSE LAYOUT PRIOR TO FABRICATION.

FIGURE 14

FOR THRU HOLE MOUNT APPLICATIONS



3530



3530

FOR CAT. NO. 3530

DESIGNATION	FUSE SIZE	L DIM.
1AG	.250 (6.4) × .625 (15.9)	.450 (11.4)
7AG	.250 (6.4) × .875 (22.2)	.700 (17.8)
8AG	.250 (6.4) × 1.000 (25.4)	.825 (21.0)
3AG	.250 (6.4) × 1.250 (31.8)	1.075 (27.3)

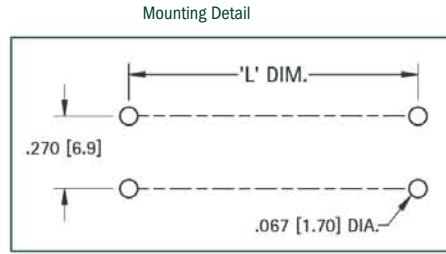


FIGURE 15

FOR RIVET MOUNT APPLICATIONS



3570



3535

FOR CAT. NO. 3531, 3533, 3535, 3570

DESIGNATION	FUSE SIZE	L DIM.
1AG	.250 (6.4) × .625 (15.9)	.450 (11.4)
7AG	.250 (6.4) × .875 (22.2)	.700 (17.8)
8AG	.250 (6.4) × 1.000 (25.4)	.825 (21.0)
3AG	.250 (6.4) × 1.250 (31.8)	1.075 (27.3)

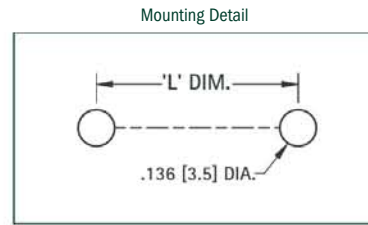


FIGURE 16

FOR SURFACE MOUNT APPLICATIONS



4247



3533

FOR CAT. NO. 3531, 3533, 3535, 3570

DESIGNATION	FUSE SIZE	L DIM.
1AG	.250 (6.4) × .625 (15.9)	.120 (3.0)
7AG	.250 (6.4) × .875 (22.2)	.365 (9.3)
8AG	.250 (6.4) × 1.000 (25.4)	.490 (12.4)
3AG	.250 (6.4) × 1.250 (31.8)	.740 (18.8)

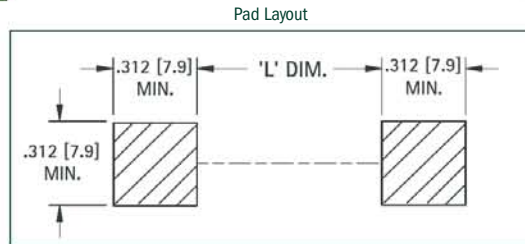


FIGURE 17

FOR SURFACE MOUNT APPLICATIONS



3532



3567

FOR CAT. NO. 3532, 3567

DESIGNATION	FUSE SIZE	L DIM.
1AG	.250 (6.4) × .625 (15.9)	.195 (5.0)
7AG	.250 (6.4) × .875 (22.2)	.445 (11.3)
8AG	.250 (6.4) × 1.000 (25.4)	.570 (14.5)
3AG	.250 (6.4) × 1.250 (31.8)	.820 (20.8)

