

# SMT BATTERY CONTACT & PAD LAYOUTS

NOTE: ALL MOUNTING DIMENSIONS ARE FOR REFERENCE ONLY. PLEASE VERIFY YOUR BATTERY LAYOUT PRIOR TO FABRICATION.

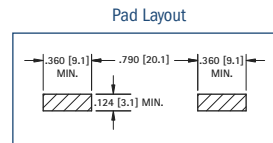
BATTERY CONTACT LAYOUTS & MOUNTING DETAILS



50  
550

CAT. NO.	"L" DIMENSION	
	For "AAAA"	For "A27"
50	0.33 (8.4) × 1.67 (42.4)	0.30 (7.6) × 1.10 (28.0)
550	0.89 (22.6)	0.32 (8.1)

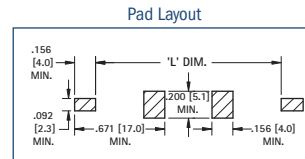
Refer to page 13 for Part Details



55  
555

CAT. NO.	"L" DIMENSION		
	For "AAA"	For "N"	For "A23"
55	0.41 (10.4) × 1.75 (44.5)	0.45 (11.4) × 1.14 (29.0)	0.40 (10.2) × 1.10 (27.9)
555	1.76 (44.7)	1.15 (29.2)	1.11 (28.2)

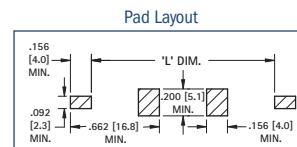
Refer to page 13 for Part Details



53  
553

CAT. NO.	"L" DIMENSION		
	For "AA"	For "2/3 A"	For "CR2"
53	0.56 (14.2) × 1.98 (50.3)	0.67 (17.0) × 1.36 (34.5)	0.60 (15.2) × 1.05 (26.7)
553	2.05 (52.1)	1.38 (35.1)	1.04 (26.4)

Refer to page 13 for Part Details

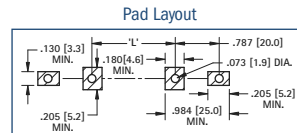
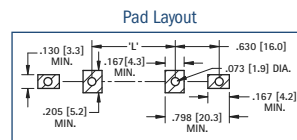


254  
246

CAT. NO.	"L" DIMENSION		
	For "2/3 A"	For "18350"	For "18650"
254	0.67 (17.0) × 1.36 (34.5)	0.71 (18.0) × 1.38 (35.0)	0.71 (18.0) × 2.56 (65.0)
246	.270 (6.9)	.324 (8.2)	1.58 (40.2)

CAT. NO.	"L" DIMENSION		
	For "20600"	For "20700"	For "21700"
246	0.79 (20.0) × 2.36 (60.0)	0.79 (20.0) × 2.76 (70.0)	0.83 (21.0) × 2.76 (70.0)
246	1.10 (28.0)	1.50 (38.0)	1.49 (38.0)

Refer to page 13 for Part Details

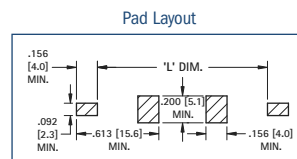


56  
556  
57  
557

CAT. NO.	"L" DIMENSION		
	For "AAA"	For "N"	For "A23"
56	0.41 (10.4) × 1.75 (44.5)	0.45 (11.4) × 1.14 (29.0)	0.4 (10.2) × 1.10 (27.9)
556	1.67 (42.4)	1.07 (27.2)	1.02 (25.9)

CAT. NO.	"L" DIMENSION		
	For "AA"	For "2/3 A"	For "CR2"
57	0.56 (14.2) × 1.98 (50.3)	0.67 (17.0) × 1.36 (34.5)	0.60 (15.2) × 1.05 (26.7)
557	1.90 (48.3)	1.23 (31.2)	0.97 (24.6)

Refer to page 13 for Part Details

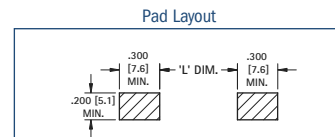


5231  
5331  
5230  
5330

CAT. NO.	"L" DIMENSION		
	For "AA"	For "2/3 A"	For "CR2"
5231	0.56 (14.2) × 1.98 (50.3)	0.67 (17.0) × 1.36 (34.5)	0.60 (15.2) × 1.05 (26.7)
5331	2.38 (60.5)	1.71 (43.4)	1.53 (24.6)

Refer to page 14 for Part Details

CAT. NO.	"L" DIMENSION				
	For "AAA"	For "N"	For "A23"	For "A27"	For "AAAA"
5230	0.41 (10.4) × 1.75 (44.5)	0.45 (11.4) × 1.14 (29.0)	0.40 (10.2) × 1.10 (27.9)	0.30 (7.6) × 1.10 (27.9)	0.33 (8.4) × 1.67 (42.4)
5330	1.96 (49.8)	1.35 (34.3)	1.31 (33.3)	1.31 (33.3)	1.86 (47.2)



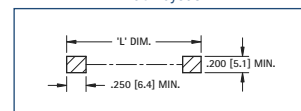
"L" dimensions reflect initial insertion deflection.



1016-1  
1020-1

CAT. NO.	"L" DIMENSION				
	For "AAA"	For "N"	For "A27"	For "A23"	For "AAAA"
1020-1	0.41 (10.4) × 1.75 (44.5)	0.45 (11.4) × 1.14 (29.0)	0.30 (7.6) × 1.10 (27.9)	0.33 (8.4) × 1.67 (42.4)	0.33 (8.4) × 1.67 (42.4)
1076-1	2.42 (61.5)	1.81 (46.0)	1.77 (44.9)	2.34 (59.4)	2.34 (59.4)
1076-2					

Pad Layout

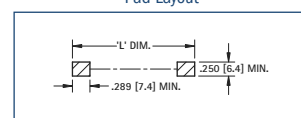


1076-2  
1088-2

CAT. NO.	"L" DIMENSION		
	For "AA"	For "2/3 A"	For "CR2"
1016-1	0.56 (14.2) × 1.98 (50.3)	0.67 (17.0) × 1.36 (34.5)	0.60 (14.2) × 1.05 (26.7)
1088-1	2.72 (69.1)	2.10 (53.3)	1.79 (45.5)
1088-2			

Refer to page 15 for Part Details

Pad Layout

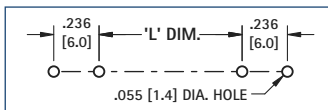


# THM BATTERY CLIP & CONTACT LAYOUTS AND MOUNTING DETAILS

NOTE: ALL MOUNTING DIMENSIONS ARE FOR REFERENCE ONLY. VERIFY YOUR BATTERY LAYOUT PRIOR TO FABRICATION.

Refer to page 13 for Part Details

Mounting Detail



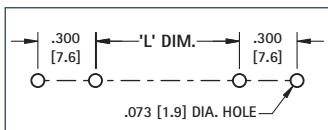
CAT. NO.	"L" DIMENSION	
	For "AAAA"	For "A27"
51	0.33 (8.4) × 1.67 (42.4)	0.300 (7.6) × 1.10 (27.9)



51

Refer to page 13 for Part Details

Mounting Detail



CAT. NO.	"L" DIMENSION		
	For "AAA"	For "N"	For "A23"
82	0.41 (10.4) × 1.75 (44.5)	0.45 (11.4) × 1.14 (29.0)	0.40 (10.2) × 1.10 (27.9)



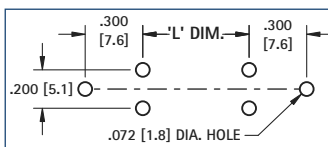
82  
92  
2915



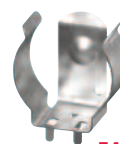
52

Refer to page 13 for Part Details

Mounting Detail



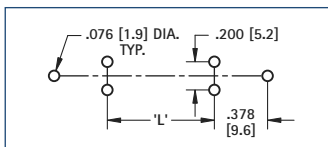
CAT. NO.	"L" DIMENSION			
	For "18650"	For "18350"	For "2/3 A"	For "17500"
54	0.71 (18.4) × 2.56 (65.0)	0.73 (18.5) × 1.38 (35.0)	0.67 (17.0) × 1.36 (34.5)	0.67 (17.0) × 1.97 (50.0)



54

Refer to page 13 for Part Details

Mounting Detail



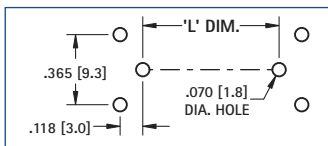
CAT. NO.	"L" DIMENSION		
	For "20600 A"	For "20700"	For "21700"
247	0.79 (20.0) × 2.36 (60.0)	0.79 (20.0) × 2.76 (70.0)	0.83 (21.0) × 2.76 (70.0)



247

Refer to page 14 for Part Details

Mounting Detail



CAT. NO.	"L" DIMENSION		
	For "2/3 A"	For "CR2"	For "AA"
595 with 628	0.67 (17.0) × 1.36 (34.5)	0.60 (15.2) × 1.05 (26.7)	0.56 (14.2) × 1.98 (50.3)



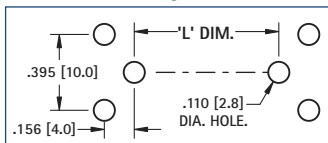
595



628

Refer to page 14 for Part Details

Mounting Detail



CAT. NO.	"L" DIMENSION		
	For "AAA"	For "N"	For "A23"
637 with 629	0.41 (10.4) × 1.75 (44.5)	0.45 (11.4) × 1.14 (29.0)	0.40 (10.2) × 1.10 (27.9)



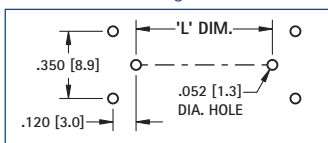
637



629

Refer to page 14 for Part Details

Mounting Detail



CAT. NO.	"L" DIMENSION		
	For "AA"	For "2/3 A"	For "CR2"
596 with 590	0.56 (14.2) × 1.98 (50.3)	0.67 (17.0) × 1.36 (34.5)	0.60 (15.2) × 1.05 (26.7)
590 with 590	2.07 (52.6)	N/A	1.14 (29.0)



596  
597



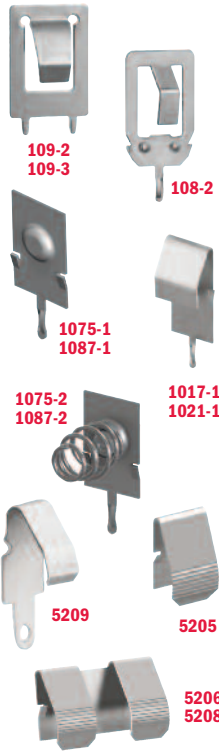
590  
591

"L" dimensions reflect initial insertion deflection.

# BATTERY CONTACT LAYOUTS AND MOUNTING DETAILS

NOTE: ALL MOUNTING DIMENSIONS ARE FOR REFERENCE ONLY. PLEASE VERIFY YOUR BATTERY LAYOUT PRIOR TO FABRICATION.

Refer to page 15 & 21 for Part Details



CAT. NO.	FIG. NO.	L DIMENSION					
		For "AA" 0.56 (14.2) × 1.98 (50.3)	For "CR2" 0.60 (15.2) × 1.05 (26.7)	For "2/3 A" 0.67 (17.0) × 1.36 (34.5)	For "17500"* 0.67 (17.0) × 1.97 (50.0)	For "18350"* 0.71 (18.0) × 1.38 (35.0)	For "18650"* 0.71 (18.0) × 2.56 (65.0)
5205	3	2.28 (57.9)	1.35 (34.3)	1.66 (42.1)	2.27 (57.7)	1.68 (42.7)	2.86 (72.6)
5205 with 5206	3	2.28 (57.9)	N/A	N/A	N/A	N/A	N/A
5209	3	2.34 (59.4)	1.41 (35.8)	1.72 (43.6)	2.33 (59.2)	1.74 (44.2)	2.92 (74.2)
5209 with 5208	3	2.34 (59.4)	N/A	N/A	N/A	N/A	N/A
1017-1 1087-1 1087-2	3	2.19 (55.6)	1.26 (32.0)	1.57 (39.8)	2.18 (55.4)	1.59 (40.4)	2.77 (70.4)

\*Built in circuit protection may increase length of battery, check battery specifications for exact battery length

CAT. NO.	FIG. NO.	L DIMENSION				
		For "AAAA" 0.33 (8.4) × 1.67 (42.4)	For "A27" 0.30 (7.6) × 1.10 (27.9)	For "A23" 0.40 (10.2) × 1.10 (27.9)	For "AAA" 0.41 (10.4) × 1.75 (44.5)	For "N" 0.45 (11.4) × 1.14 (29.0)
1021-1 1075-1 1075-2	3	1.88 (47.8)	1.31 (33.3)	1.31 (33.3)	1.96 (49.8)	1.35 (34.3)

CAT. NO.	FIG. NO.	L DIMENSION				
		For "AAA" 0.41 (10.4) × 1.75 (44.5)	For "N" 0.45 (11.4) × 1.14 (29.0)	For "AA" 0.56 (14.2) × 1.98 (50.3)	For "CR2" 0.60 (15.2) × 1.05 (26.7)	For "2/3A" 0.67 (17.0) × 1.24 (31.5)
108-2	3	1.99 (50.5)	1.38 (35.0)	2.22 (56.4)	1.29 (32.8)	1.55 (39.4)

CAT. NO.	FIG. NO.	L DIMENSION									
		For "AA" 0.56 (14.2) × 1.98 (50.3)	For "CR2" 0.60 (15.2) × 1.05 (26.7)	For "2/3 A" 0.67 (17.0) × 1.24 (31.5)	For "17500"* 0.67 (17.0) × 1.97 (50.0)	For "18350"* 0.71 (18.0) × 1.38 (35.0)	For "18650"* 0.71 (18.0) × 2.56 (65.0)	For "C" 0.99 (25.0) × 1.97 (50.0)	For "26650" 1.02 (26.0) × 2.56 (65.0)	For "D" 1.30 (33.0) × 2.24 (56.9)	
1107-1	3	2.19 (55.6)	1.26 (32.0)	1.52 (38.6)	2.18 (55.4)	1.59 (40.4)	2.77 (70.4)	2.18 (55.4)	2.77 (70.4)	2.45 (62.2)	
109-2	3	2.22 (56.4)	1.29 (32.8)	1.55 (39.4)	2.21 (56.1)	1.62 (41.1)	2.80 (71.1)	N/A	N/A	N/A	
109-3	3	N/A	N/A	N/A	N/A	N/A	N/A	2.21 (56.1)	1.62 (41.1)	2.48 (63.0)	

\*Built in circuit protection may increase length of battery, check battery specifications for exact battery length

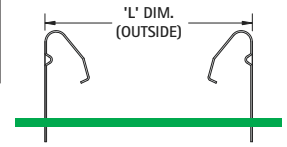


Fig. 3 PC Mount  
L dimensions reflect initial insertion deflection.

Refer to page 15 for Part Details



CAT. NO.	FIG. NO.	L DIMENSION				
		For "AAAA" 0.33 (8.4) × 1.67 (42.4)	For "A27" 0.30 (7.6) × 1.10 (27.9)	For "A23" 0.40 (10.2) × 1.10 (27.9)	For "AAA" 0.41 (10.4) × 1.75 (44.5)	For "N" 0.45 (11.4) × 1.14 (29.0)
230-1	5	1.67 (42.4)	1.10 (27.9)	1.10 (27.9)	1.73 (43.9)	1.14 (29.0)

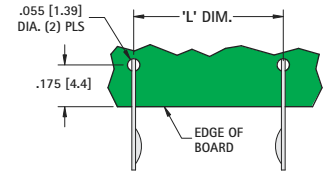
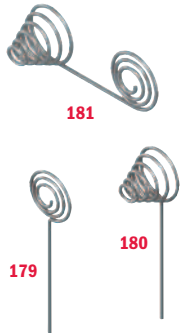


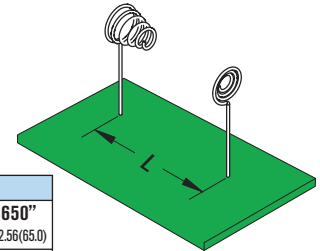
Fig. 5 Off-Board Mount

Refer to page 16 for Part Details

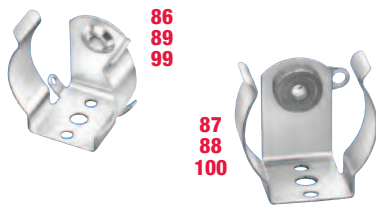


CAT. NO.	L DIMENSION				
	For "AAAA" 0.33 (8.4) × 1.67 (42.4)	For "A27" 0.30 (7.6) × 1.10 (27.9)	For "A23" 0.40 (10.2) × 1.10 (27.9)	For "AAA" 0.41 (10.4) × 1.75 (44.5)	For "N" 0.45 (11.4) × 1.14 (29.0)
179 180 181	1.88 (47.8)	1.27 (32.3)	1.23 (31.2)	1.23 (31.2)	1.80 (45.7)

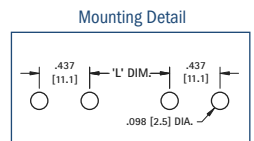
CAT. NO.	L DIMENSION					
	For "AA" 0.56 (14.2) × 1.98 (50.3)	For 2/3 "A" 0.67 (17.0) × 1.36 (34.5)	For "CR2" 0.60 (14.2) × 1.05 (26.7)	For "17500" 0.67 (17.0) × 1.97 (50.0)	For "18350" 0.71 (18.0) × 1.38 (35.0)	For "18650" 0.71 (18.0) × 2.56 (65.0)
242 243 244	2.12 (53.8)	1.50 (38.1)	1.19 (30.2)	2.12 (53.8)	1.52 (38.6)	2.70 (68.6)



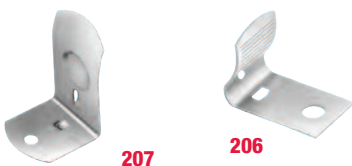
Refer to page 22 for Part Details



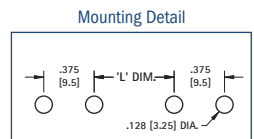
CAT. NO.	"L" DIMENSION		
	For "AA" 0.56 (14.2) × 1.98 (50.3)	For "C" 1.00 (25.4) × 1.97 (50.0)	For "D" 1.30 (33.0) × 2.42 (61.5)
99	0.91 (23.0)	-	-
100	-	-	-
86	-	0.91 (23.0)	-
87	-	-	1.19 (30.2)
88	-	-	-
89	-	-	-



Refer to page 22 for Part Details



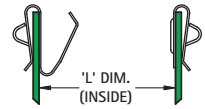
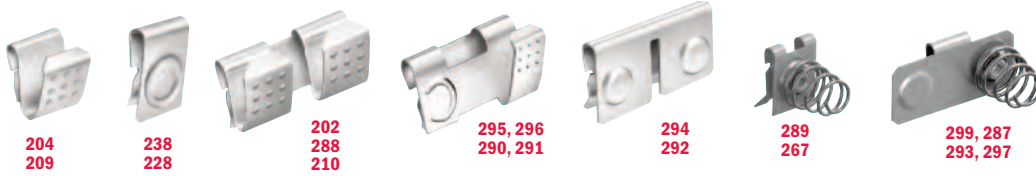
CAT. NO.	"L" DIMENSION		
	For "AA" 0.56 (14.2) × 1.98 (50.3)	For "C" 1.00 (25.4) × 1.97 (50.0)	For "D" 1.30 (33.0) × 2.42 (61.5)
206	1.10 (27.9)	-	-
207	-	0.81 (20.6)	-
208	-	-	1.25 (31.8)



# BATTERY LAYOUTS FOR MOLDED CASE CONTACTS

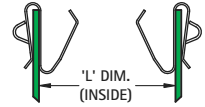
NOTE: ALL MOUNTING DIMENSIONS ARE FOR REFERENCE ONLY. VERIFY YOUR BATTERY LAYOUT PRIOR TO FABRICATION.

Refer to pages 20 & 21 for Part Details



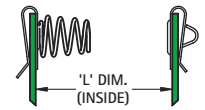
**Fig. 1 Spring-Button**

L dimensions reflect initial insertion deflection.



**Fig. 2 Spring-Spring**

L dimensions reflect initial insertion deflection.



**Fig. 3 Spring-Button**

L dimensions reflect initial insertion deflection.

CAT. NO.	FIG. NO.	L DIMENSION					
		For "AAAA" 0.33 (8.4) × 1.67 (42.4)	For "A 27" 0.30 (7.7) × 1.10 (28.0)	For "A23" 0.39 (10.0) × 1.10 (28.0)	For "AAA" 0.41 (10.4) × 1.75 (44.5)	For "N" 0.45 (11.4) × 1.14 (29.0)	
204 with 238	1	1.79 (45.5)	1.22 (31.0)	1.22 (31.0)	1.87 (47.5)	1.26 (32.0)	
204,238 with 295, 296	1	N/A	N/A	N/A	1.87 (47.5)	N/A	
202 with 294	1	N/A	N/A	N/A	1.87 (47.5)	N/A	
204 with 204	2	1.89 (48.0)	1.32 (33.5)	1.32 (33.5)	1.97 (50.0)	1.36 (34.5)	
204 with 202	2	N/A	N/A	N/A	1.97 (50.0)	N/A	
267 with 238	3	1.86 (47.2)	1.29 (32.8)	1.29 (32.8)	1.94 (49.3)	1.33 (33.8)	
267, 238 with 299, 287	3	N/A	N/A	N/A	1.94 (49.3)	N/A	

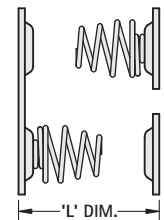
CAT. NO.	FIG. NO.	L DIMENSION						
		For "AA" 0.56 (14.2) × 1.98 (50.3)	For "CR2" 0.60 (14.2) × 1.05 (26.7)	For "2/3 A" 0.67 (17.0) × 1.34 (34.5)	For "17500" 0.671 (17.0) × 1.97 (50.0)	For "18350" 0.71 (18.0) × 1.38 (35.0)	For "18650" 0.71 (18.0) × 2.56 (65.0)	
209 with 228	1	2.13 (54.1)	1.20 (30.5)	1.46 (37.1)	2.12 (53.8)	1.53 (38.8)	2.71 (68.8)	
209, 228 with 290, 291	1	2.13 (54.1)	N/A	N/A	N/A	N/A	N/A	
288, 210 with 292	1	2.13 (54.1)	N/A	N/A	N/A	N/A	N/A	
209 with 209	2	2.27 (57.7)	1.34 (34.0)	1.60 (40.6)	2.26 (57.4)	1.67 (42.3)	2.85 (72.3)	
209 with 288, 210	2	2.27 (57.7)	N/A	N/A	N/A	N/A	N/A	
289 with 228	3	2.24 (56.9)	1.31 (33.3)	1.62 (41.1)	2.23 (56.6)	1.64 (41.6)	2.82 (71.6)	
289, 228 with 293, 297	3	2.24 (56.9)	N/A	N/A	N/A	N/A	N/A	

\*Built in circuit protection may increase length of battery, check battery specifications for exact battery length

Refer to pages 17 thru 19 for Part Details



**Fig. 4**



**Fig. 5**

CAT. NO.	FIG. NO.	"L" DIMENSION				
		For "AAAA" 0.33 (8.4) × 1.67 (42.4)	For "A27" 0.30 (7.6) × 1.10 (27.9)	For "A23" 0.40 (10.2) × 1.10 (27.9)	For "AAA" 0.41 (10.4) × 1.75 (44.5)	For "N" 0.45 (11.4) × 1.14 (29.0)
5203 with 5225	4	1.87 (47.5)	1.30 (33.0)	1.30 (33.0)	1.95 (49.5)	1.34 (34.0)
5204 with 5226	4	1.87 (47.5)	1.30 (33.0)	1.30 (33.0)	1.95 (49.5)	1.34 (34.0)
5214, 5213 with 5203, 5225	5	N/A	N/A	N/A	1.95 (49.5)	N/A

CAT. NO.	FIG. NO.	"L" DIMENSION						
		For "AA" 0.56 (14.2) × 1.98 (50.3)	For "CR2" 0.60 (15.2) × 1.05 (26.7)	For "2/3 A" 0.67 (17.0) × 1.36 (34.5)	For "17500" 0.67 (17.0) × 1.97 (50.0)	For "18350" 0.71 (18.0) × 1.38 (35.0)	For "18650" 0.71 (18.0) × 2.56 (65.0)	
5202 with 5224	4	2.23 (56.6)	1.30 (33.0)	1.61 (40.9)	2.22 (56.5)	1.63 (41.4)	2.81 (71.4)	
5222 with 5221	4	2.24 (56.9)	1.31 (33.3)	1.62 (41.1)	2.23 (56.6)	1.64 (41.7)	2.82 (71.6)	
5201 with 5223	4	2.24 (56.9)	1.31 (33.3)	1.62 (41.1)	2.23 (56.6)	1.64 (41.7)	2.82 (71.6)	
5220 with 5219	4	2.24 (56.9)	1.31 (33.3)	1.62 (41.1)	2.23 (56.6)	1.64 (41.7)	2.82 (71.6)	
5201, 5223 with 5210, 5211	5	2.24 (56.9)	N/A	N/A	N/A	N/A	N/A	
5222, 5221 with 5212	5	2.24 (56.9)	N/A	N/A	N/A	N/A	N/A	
5220, 5219 with 5217, 5218	5	2.24 (56.9)	N/A	N/A	N/A	N/A	N/A	
5227 with 5228	5	2.24 (56.9)	N/A	N/A	N/A	N/A	N/A	

CAT. NO.	FIG. NO.	"L" DIMENSION		
		For "C" 0.99 (25.0) × 1.97 (50.0)	For "26650" 1.02 (26.0) × 2.56 (65.0)	For "D" 1.30 (33.0) × 2.24 (56.9)
5240 with 5241	4	2.25 (57.2)	3.07 (78.0)	N/A
5250 with 5251	4	N/A	N/A	2.75 (69.9)
5240, 5241 with 5242	5	2.25 (57.2)	N/A	N/A
5250, 5251 with 5252, 5253	5	N/A	N/A	2.75 (69.9)

\*Built in circuit protection may increase length of battery, check battery specifications for exact battery length